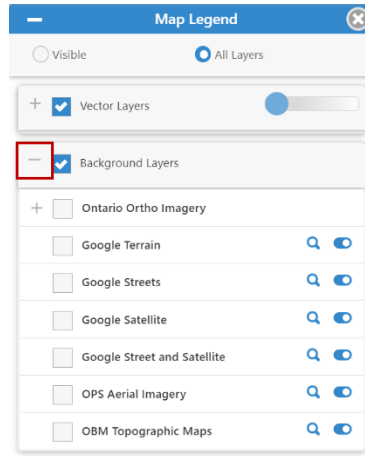


# GeoViewer – Ontario Historical Imagery (MapCast)

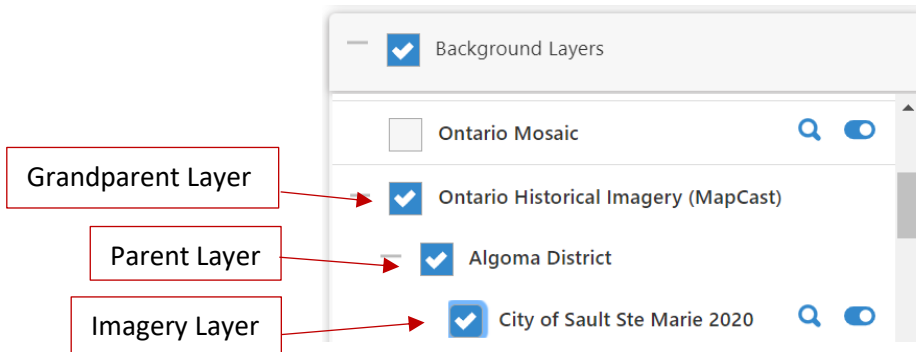
## Quick Tips

### Tips for using Ontario Historical Imagery:

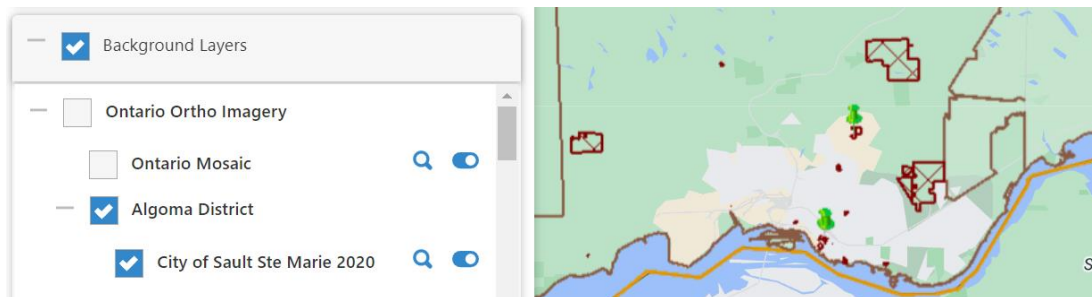
To expand the Background Layers card select the + beside Background Layers. This makes it easier to view all the available layers.



When you select an imagery layer, all parent layers will be turned on as well. For example, selecting City of Sault Ste Marie 2020 will also turn on Algoma District and Ontario Historical Imagery (MapCast).



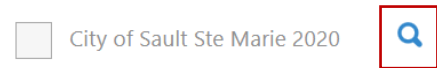
Turning off a parent layer will remove the child layers that are currently turned on from the map. The child layers will remain checked on for ease of turning on and off layers. For example, selecting Ontario Historical Imagery (MapCast) will turn off the visible layer on the map even though Algoma District and City of Sault Ste Marie remain checked off.



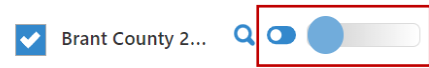
# GeoViewer – Ontario Historical Imagery (MapCast)

## Quick Tips

You can only turn on a layer when it is in the Map View. To zoom into the area, select the magnifying glass next to the layer.



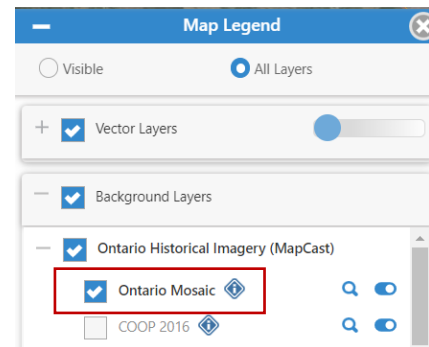
You can change the transparency of a layer by selecting the slider icon and then using the transparency slider. This is useful to view more than one layer at a time.



Turn on one layer at a time and let the map load each time.

### How do I turn on Ontario Historical Imagery for all of Ontario?

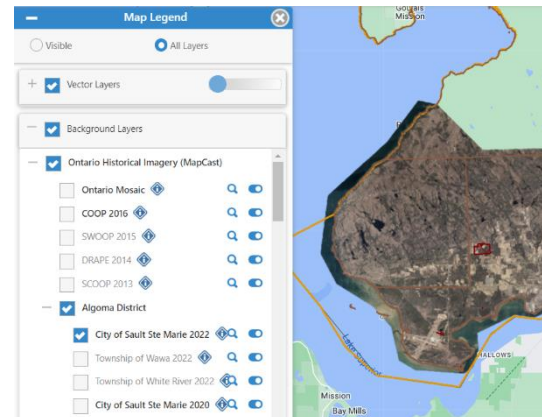
Under Ontario Historical Imagery, select the check box beside Ontario Mosaic. This will turn on the Ortho Imagery for the whole province.



### How do I turn on Ortho Imagery for a specific area of Ontario?

- 1) In the Background Layers card, select the + beside Ontario Historical Imagery (MapCast).
- 2) Find an area that you would like to view. Select the + beside the area.
- 3) Layers will be separated by year that the imagery was taken. Select the check box beside the year that you would like to view.

*Note:* If you select two or more years, the layer closest to the top of the list will be displayed on top and will be visible.



### How can I compare imagery from two different years at the same time?

- 1) Once you have found the area that you would like to view in the legend select the + beside the area. Select the checkbox beside the years that you would like to view.
- 2) The year closest to the top of the list will be displayed on top and viewable on the map. Select the slider icon to display the transparency slider.
- 3) Slide the slider to the right to make the layer more transparent. You will begin to see the second imagery layer underneath. This is helpful to be able to see how areas have changed over time.

